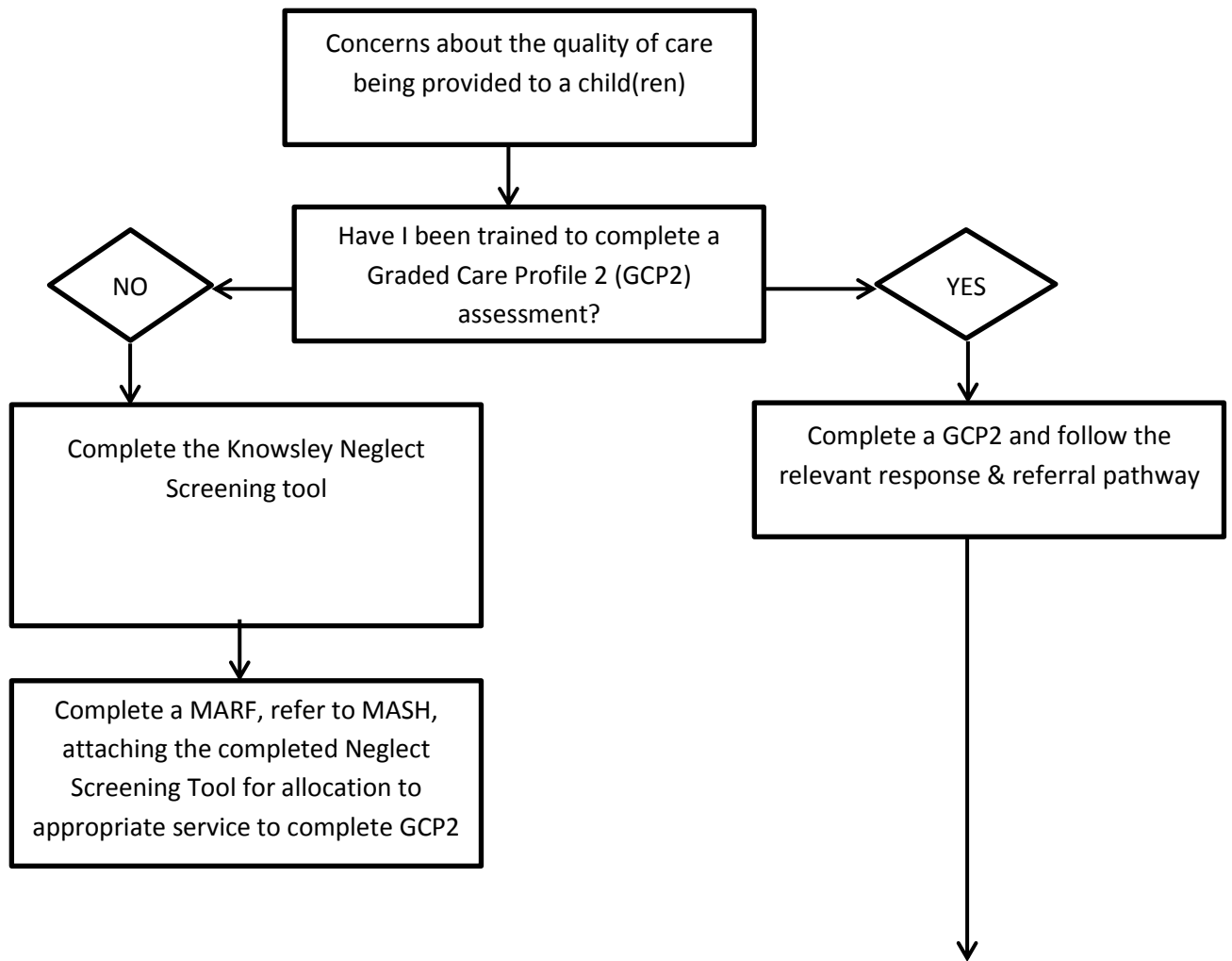


KSCP Assessing Neglect Decision making flowchart



GCP2 Grade	Description	Response/ Referral Pathway
1	No neglectful parenting Consistent good quality parenting where the child's needs are always paramount or a priority.	Normal universal access
2	No neglectful parenting Consistent good quality parenting where the child's needs are always paramount or a priority.	Normal universal access Further assessment/ signposting as and when indicated.
3	Mild neglect Failure to provide care in one or two areas of basic needs, but most of the time a good quality of care is provided across the majority of the domains.	Support through Early Help likely to be beneficial
4	Moderate neglect Failure to provide good quality care across quite a number of the areas of the child's needs some of the time. Can occur when less intrusive measures such as community or single agency interventions have failed, or some moderate harm to the child has or is likely to occur (for example, the child is consistently inappropriately dressed for the weather — wearing shorts and sandals in the middle of winter).	A multi-agency intervention is required. This can be through Early help or through a Social Care assessment if a child is in need. Consultation with the MASH advised. Where no improvement (or decline) is evidenced referral to Children's Social Care required.
5	Severe neglect Failure to provide good quality care across most of the child's needs most of the time. Occurs when severe or long-term harm has been or is likely to be done to the child or the parents/ carers are unwilling or unable to engage in work.	Consultation with the MASH needed. Referral to Children's Social Care through the MASH may be required. If child subject to CP plan, repeat tool for each review